



STRUBENVALE PRIMARY SCHOOL

SOCIAL SCIENCES

GRADE 4 – TERM 2 /2020

**INSTRUCTIONS:**

- USE YOUR GEOGRAPHY WORK BOOK.
- WORK NEATLY.
- USE A BLUE PEN.
- DO NOT RUSH THROUGH THE WORK, DO 1 ACTIVITY A DAY
- WRITE THE HEADING ACCORDINGLY. E.G

**WEEK 1**

**MAP SKILLS**

**DAY 1**

**HEADING**

---

**CORRECTIONS**



**WEEK 8**

**DAY 1 TO DAY 5**

**ACTIVITY 1**

1. 1. B  
2. C  
3. D  
4. A
2. ABOVE / FROM THE TOP
3. SIDE

**ACTIVITY 2**

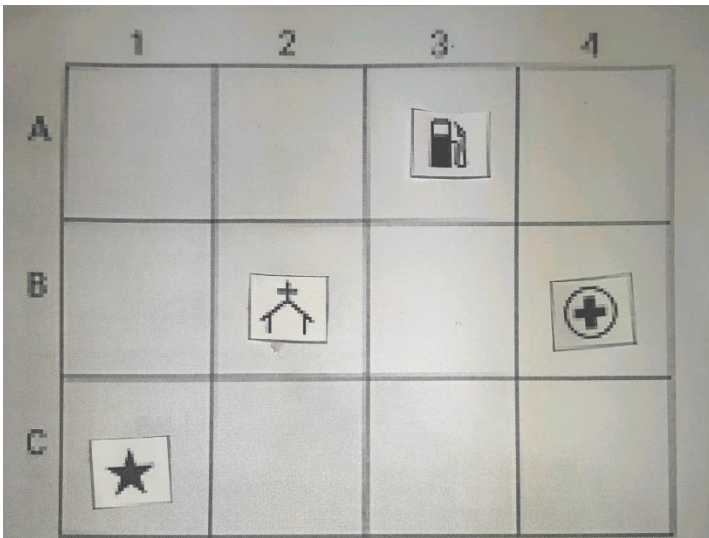
1. A. MAIN ROAD  
B. NELSON ROAD  
C. STATION ROAD  
D. MAIN ROAD
2. A. FALSE  
B. TRUE  
C. TRUE  
D. FALSE
3. A.   
B. 

**ACTIVITY 3**

- 1. A. A4 POST OFFICE
- B. C4 LIBRARY
- C. B5 PETROL STATION
  
- 2. A. B2
- B. A1

**ACTIVITY 4**

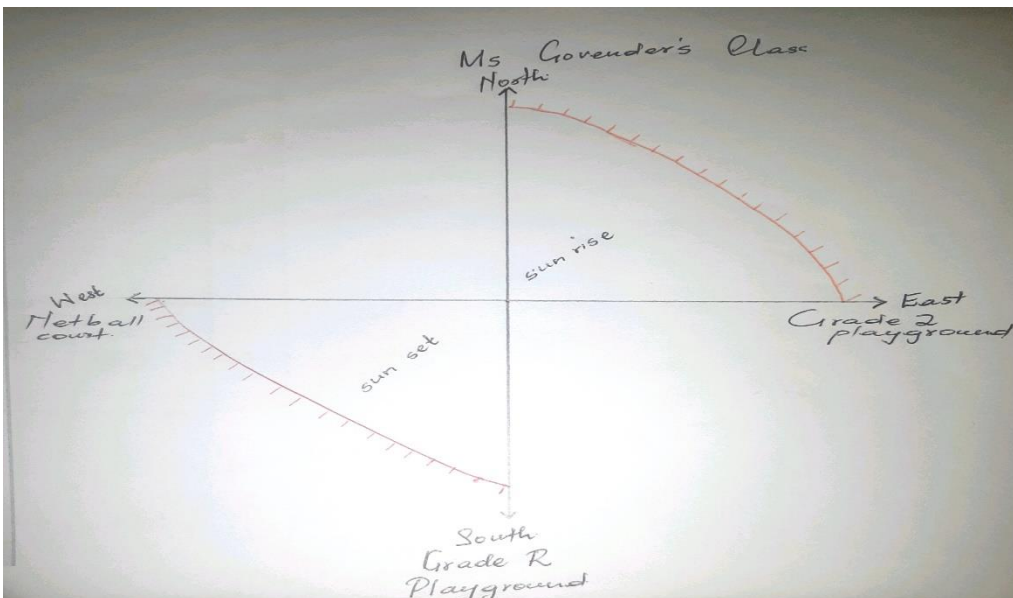
1. ,



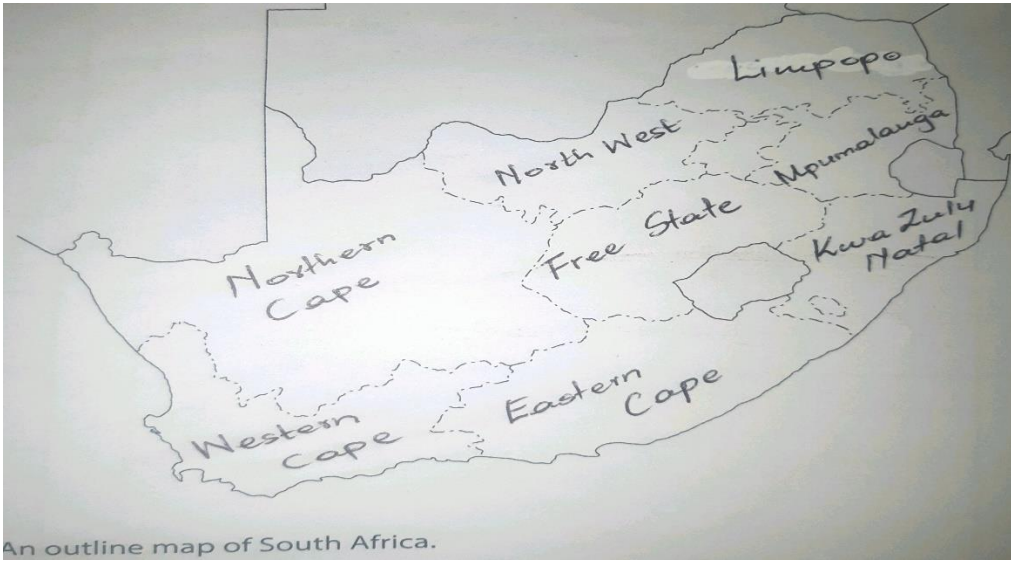
- 2. A. PETROL STATION A3
- B. CHURCH B2
- C. CLINIC B4
- D. POLICE STATION C1

**ACTIVITY 5**

1. 2. 3.



**ACTIVITY 6**



**ACTIVITY 7**

1. A. JOHANNESBURG  
B. TSHWANE/ PRETORIA  
C. DURBAN  
D. CAPE TOWN
  2. GAUTENG
  3. 9
  4. A. JOHANNESBURG INTERNATIONAL AIRPORT  
B. CAPE TOWN INTERNATIONAL AIRPORT  
C. DURBAN INTERNATIONAL AIRPORT  
D. MBOMBELA AIRPORT  
E. UPINGTON AIRPORT
- ANSWERS WILL VARY

**ACTIVITY 8**

1. 2. 3.



4. ANTARCTICA
5. ASIA